

## Market Analysis 2020 on 9th International Conference on Epidemiology & Public Health, September 24-25, 2020 | Singapore

**Marco Balenci**

Italian Association of Analytical Psychology, Italy E-mail: [marco.balenci@gmail.com](mailto:marco.balenci@gmail.com)

[Conference Series LLC Ltd](#) is going to organize "[9th International Conference on Epidemiology and Public Health during September 24-25, 2020 at Singapore](#)" (**Epidemiology Summit 2020**) with the theme "Exploring the new challenges in the field of Epidemiology and Public Health".

[Epidemiology Summit 2020](#) is a global event where experts will be delivering and presenting their advanced and innovative research on the topics such as Maternal, Infant and Child Health, Adolescent Health, Reproductive Medicine & Women Health, Healthcare Associated Diseases, Epidemiology and chronic diseases, Sexually Transmitted Diseases, Epidemiology and Cancers, Diabetes & Public Health, Obesity & Public Health, Epidemiology and Oral Health, Public Health Nursing, [Epidemiology and Public Health](#).

We cordially invite all the speakers and delegates from around the world to attend Epidemiology Summit 2020 conference which includes keynote introductions, Oral talks, Poster presentation and Exhibitions. Companies related to Medical and health care are also invited to display their products at the conference venue.

Epidemiology Summit 2020 offers emerging scholar awards to the outstanding researchers, exceptional graduates or early academicians who have distinctive enthrallment towards the conference themes.

### **About Epidemiology & Public Health:**

The branch that deals with the factors such as distribution and controlling of diseases related to health is said to be Epidemiology. It is a necessary aspect of public health practice. We can easily understand how many people have disease or disorder by [Epidemiology](#) research. Public Health is a part of sciences, skills and convictions that is focused on the preservation. Analytical Epidemiology aims to research and study risk and protector factors of diseases and identify factors in a diseased population that varies from a non-diseased population. Where Descriptive Epidemiology helps to describe because of disease within a population, it helps to understand the occurrence of disease.

### **Importance & Scope:**

[Public health](#) is the science of accumulating and reserving national, international and worldwide resources to ensure health quality of the people. This can be accomplished by fostering healthy life habits, lifestyles, discovery of new practices to find finer treatment and prevention methods. Public health embraces both social and scientific knowledge. [Epidemiology](#) on the other hand can be regarded as the science of systematic study of relations and the effects of diseases. It plays a key role in official nutritional guidance about nutritional deficiencies which leads to prevention of chronic diseases. Thus, epidemiology of nutrition plays an important role. Hence the public health, epidemiology and nutrition play key roles factors in maintaining world health.

### **Epidemiology market:**

[Epidemiology Summit 2020](#) welcomes all the researchers, associations, exhibitors and attendees from all over the world to Singapore. Singapore is the country that is rapidly evolving social progress and economy due to which the milestones of healthcare have been achieved in very short period. It has a widespread system of healthcare.

In the year 2000, World Health Organization has ranked Singapore as 6th position regarding world's health systems. For analyzing the data of [epidemiology](#), various tools like mortality data, disease incidences etc. will be utilized. This assists in the assessments of various disease occurrences.

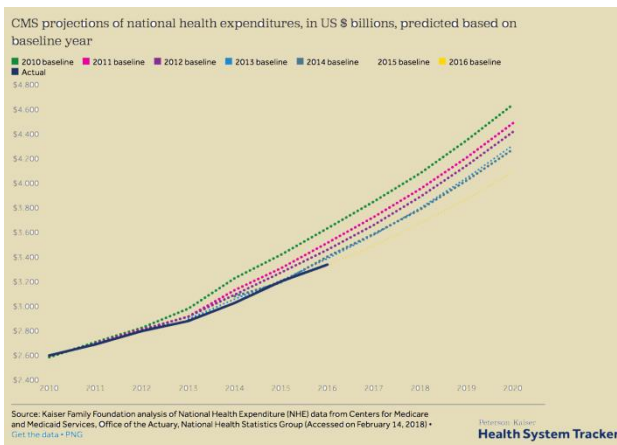
DelveInsight is a leading Business Consultant and Market Research Firm which has become the knowledge partner for biotechnology and pharmaceutical companies by providing competitive intelligence information which aids them to strategize and discover the target areas & potential customers for their products.

The database of DelveInsight currently has over 3000 reports which elaborate the domains of Indication Insight, Mechanism of Action, Drug Insights and API Insights. In addition to that, DelveInsight is providing Therapeutic intelligence to the companies with Strategic

reports on Immuno-Oncology, Gene Therapy, [Stem Cell Therapy](#), Antibody-Drug Conjugates and many more.

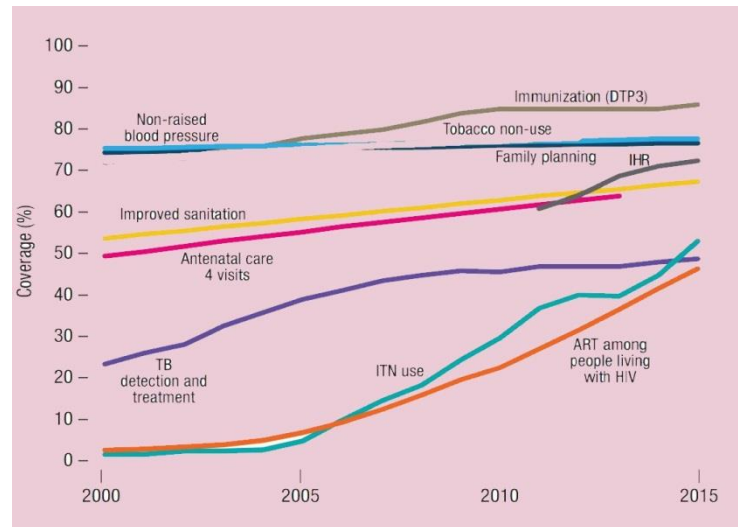
Market insights, epidemiology and market forecasting reports provides an insight on the forecast of a indication over a period of time which helps an organization to better understand the business development strategies from present and futuristic point of view.

DelveInsight expertise has expanded from an initial focus on Pipeline & Marketed Reports to Market Forecasting and [Epidemiology](#) Reports. With the dedicated analytical and forecasting team, Delve Insight has released 13 Reports on Market insights, epidemiology and market forecast Reports. These Reports will provide an insight on the forecast of the indication in seven major markets during 2010-2020. The [epidemiological](#) forecast for the diagnosed prevalence of the disease in 7MM is supported by the data which has been obtained from studies conducted in the respective countries.



#### Source:

[https://www.google.com/search?q=healthcare+spending+till+2019+graph&rlz=1C1RLNS\\_enIN854IN854&source=lnms&tbn=isch&sa=X&ved=2ahUKEwiFItbh2LnmAhVEjOYKHSfYctMQ\\_AUoAXoECA0QAw&biw=1366&bih=608#imgrc=yY9Pp2jGVUC6rM:](https://www.google.com/search?q=healthcare+spending+till+2019+graph&rlz=1C1RLNS_enIN854IN854&source=lnms&tbn=isch&sa=X&ved=2ahUKEwiFItbh2LnmAhVEjOYKHSfYctMQ_AUoAXoECA0QAw&biw=1366&bih=608#imgrc=yY9Pp2jGVUC6rM:)



#### Source:

[https://www.google.com/search?q=public+health+globally+graph&rlz=1C1RLNS\\_enIN854IN854&source=lnms&tbn=isch&sa=X&ved=2ahUKEwj\\_xfzL2bnmAhXYIbcAHan1AeYQ\\_AUoAXoECA0QAw&biw=1366&bih=608#imgrc=-p32CfjELc\\_YnM:](https://www.google.com/search?q=public+health+globally+graph&rlz=1C1RLNS_enIN854IN854&source=lnms&tbn=isch&sa=X&ved=2ahUKEwj_xfzL2bnmAhXYIbcAHan1AeYQ_AUoAXoECA0QAw&biw=1366&bih=608#imgrc=-p32CfjELc_YnM:)